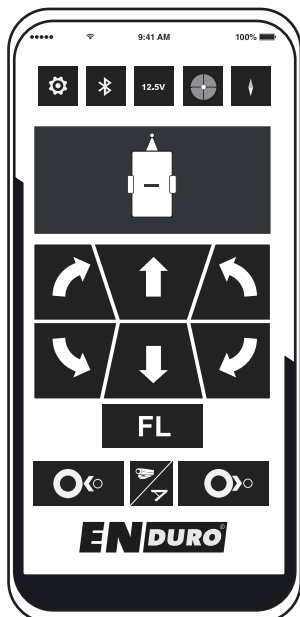
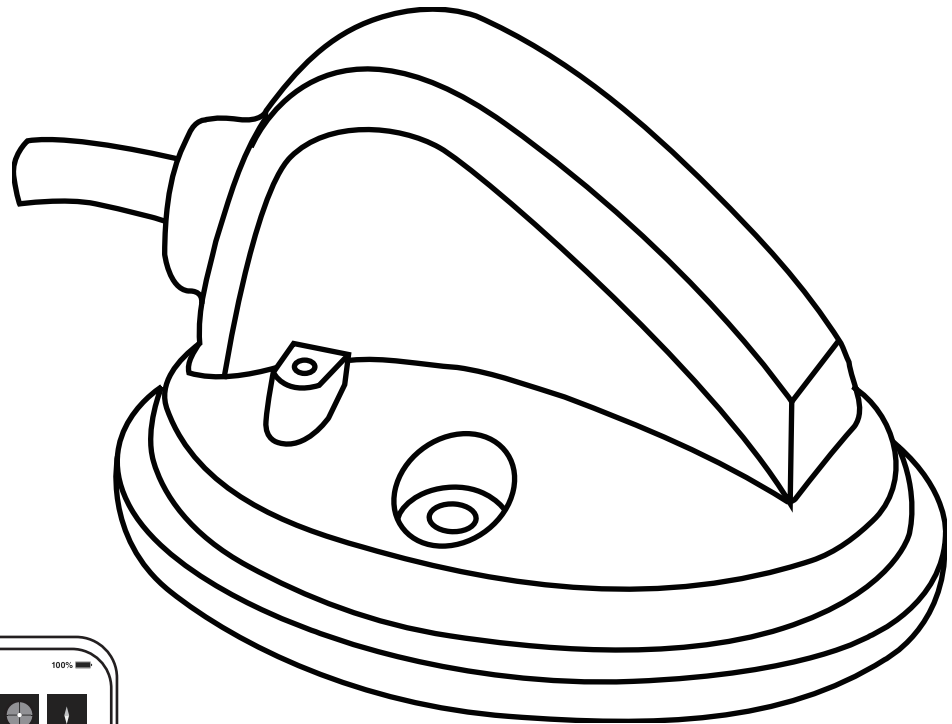
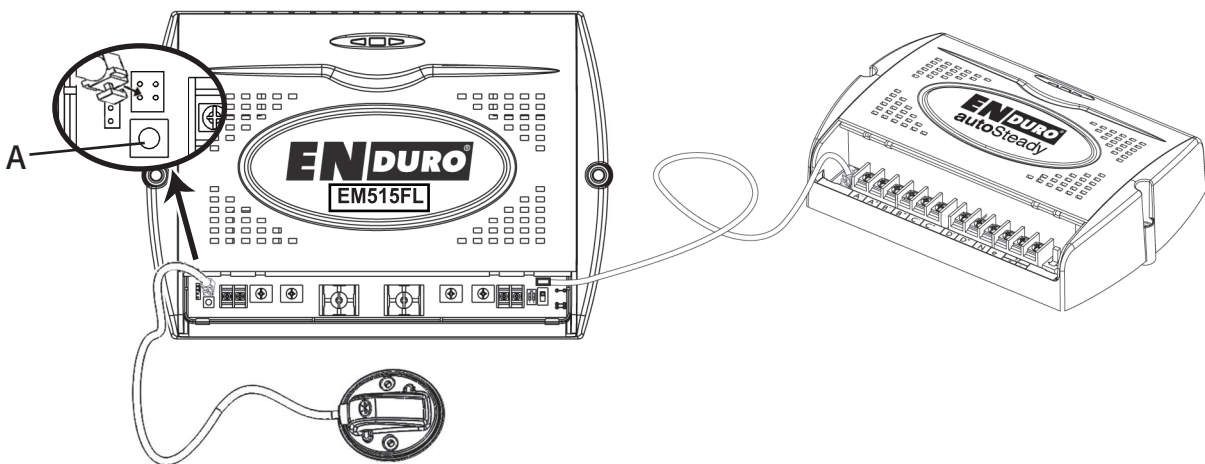
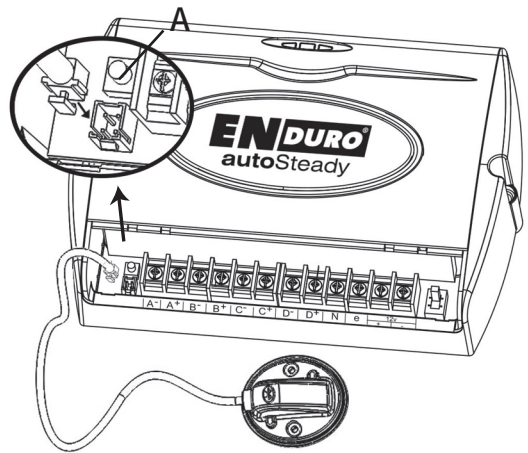
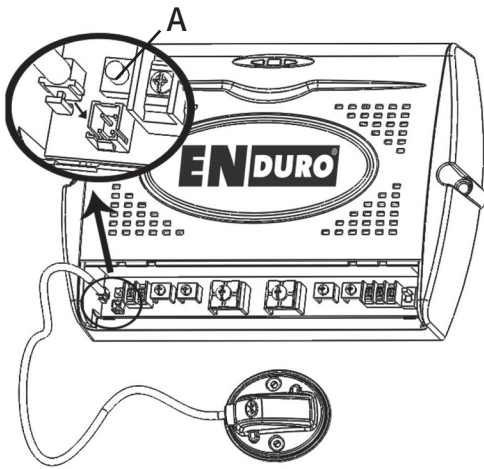
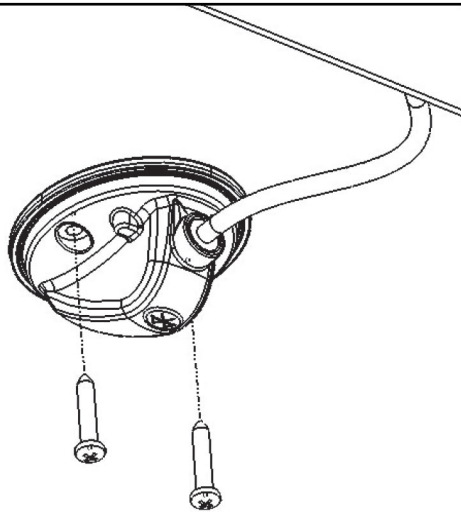
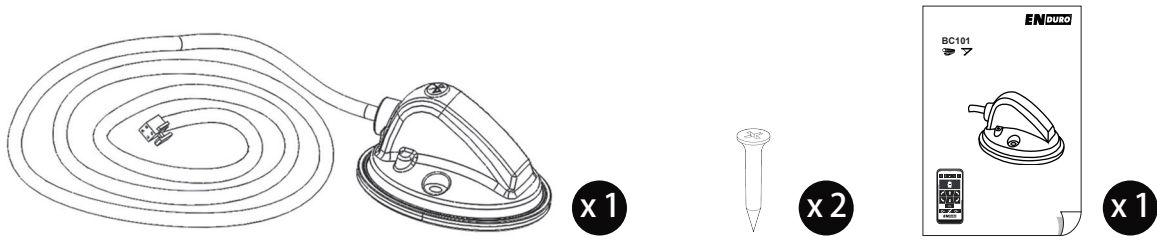


## BC101



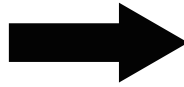
Scope of delivery



 Push reset button A to pair

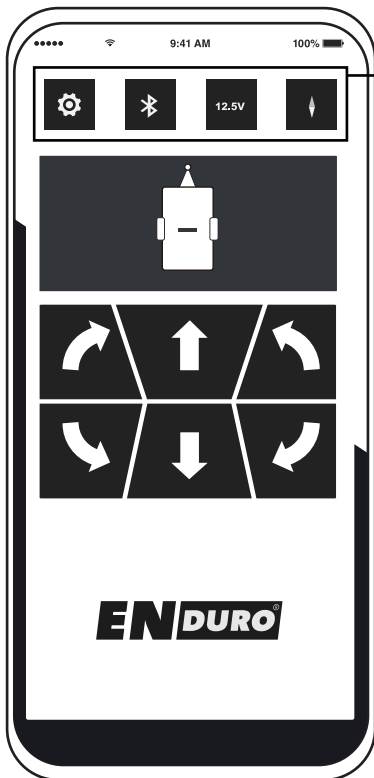


# My Enduro

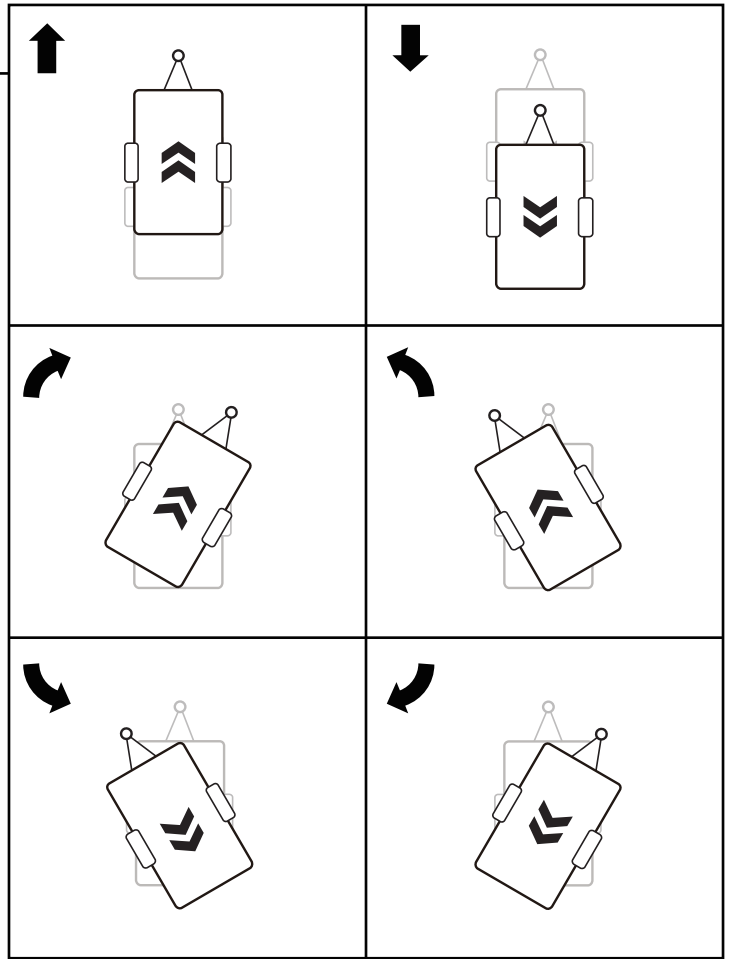
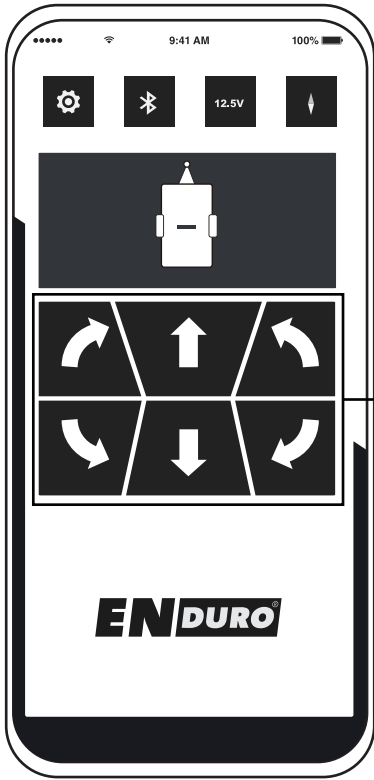


	FL Version	
	Automatic Version	
	Manual Version	
	AutoSteady	

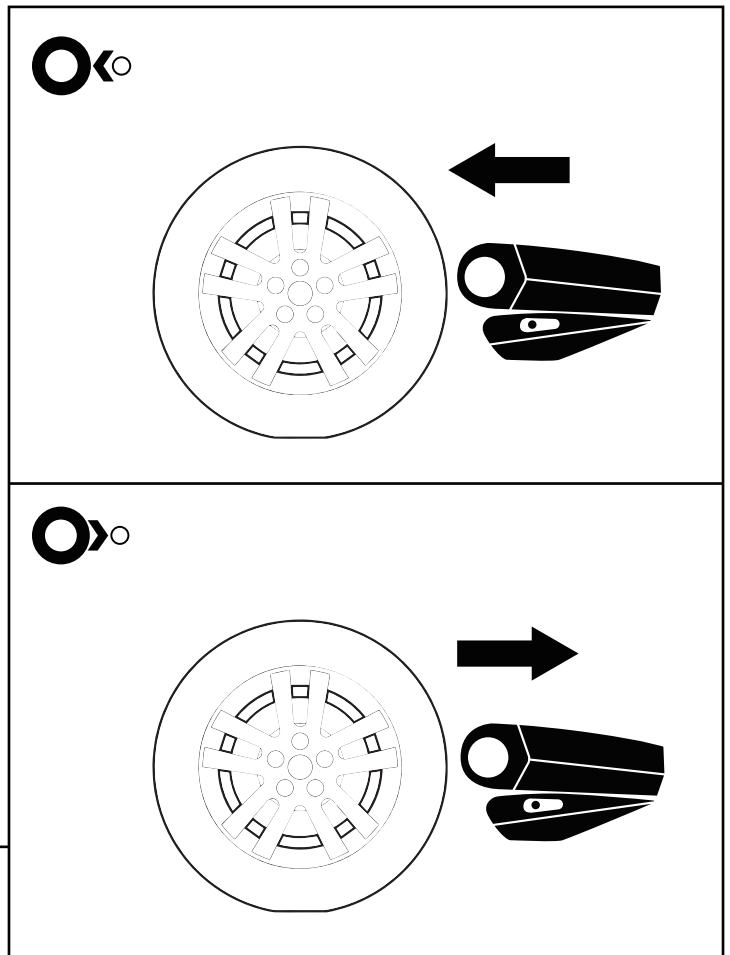
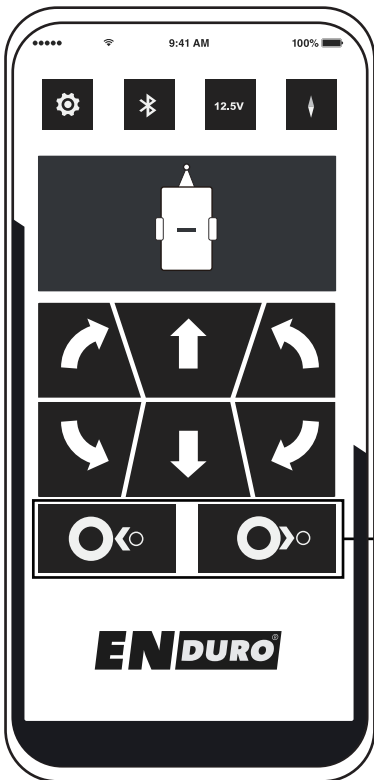
## Manual Version



	Language >		
	Clean up >		
12.5V			

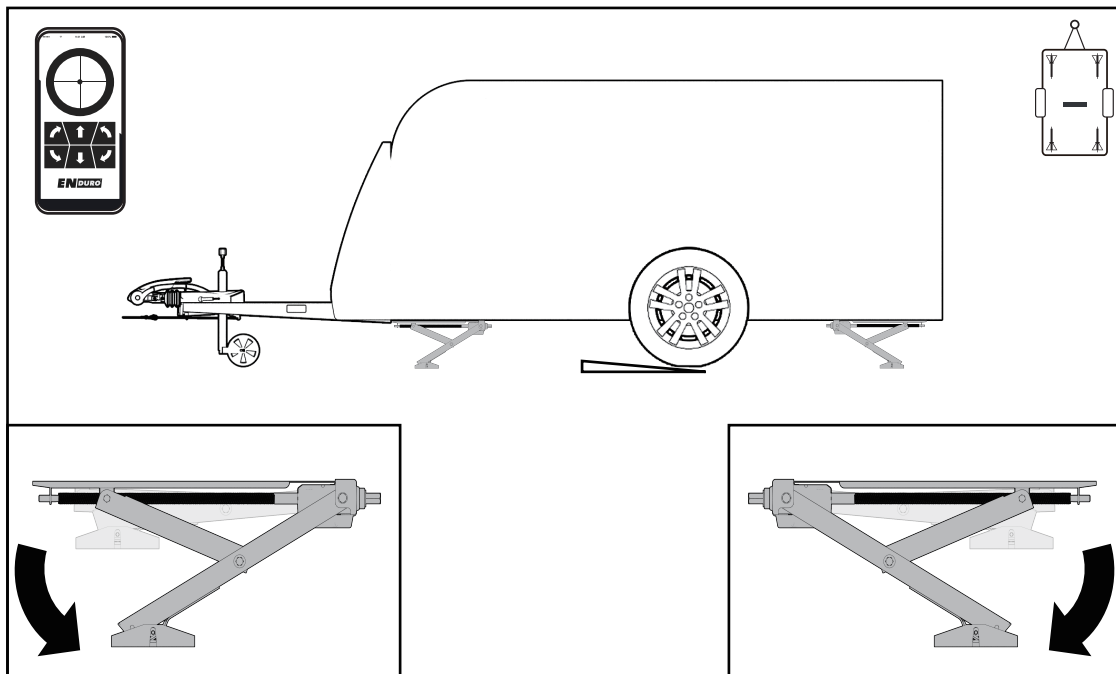
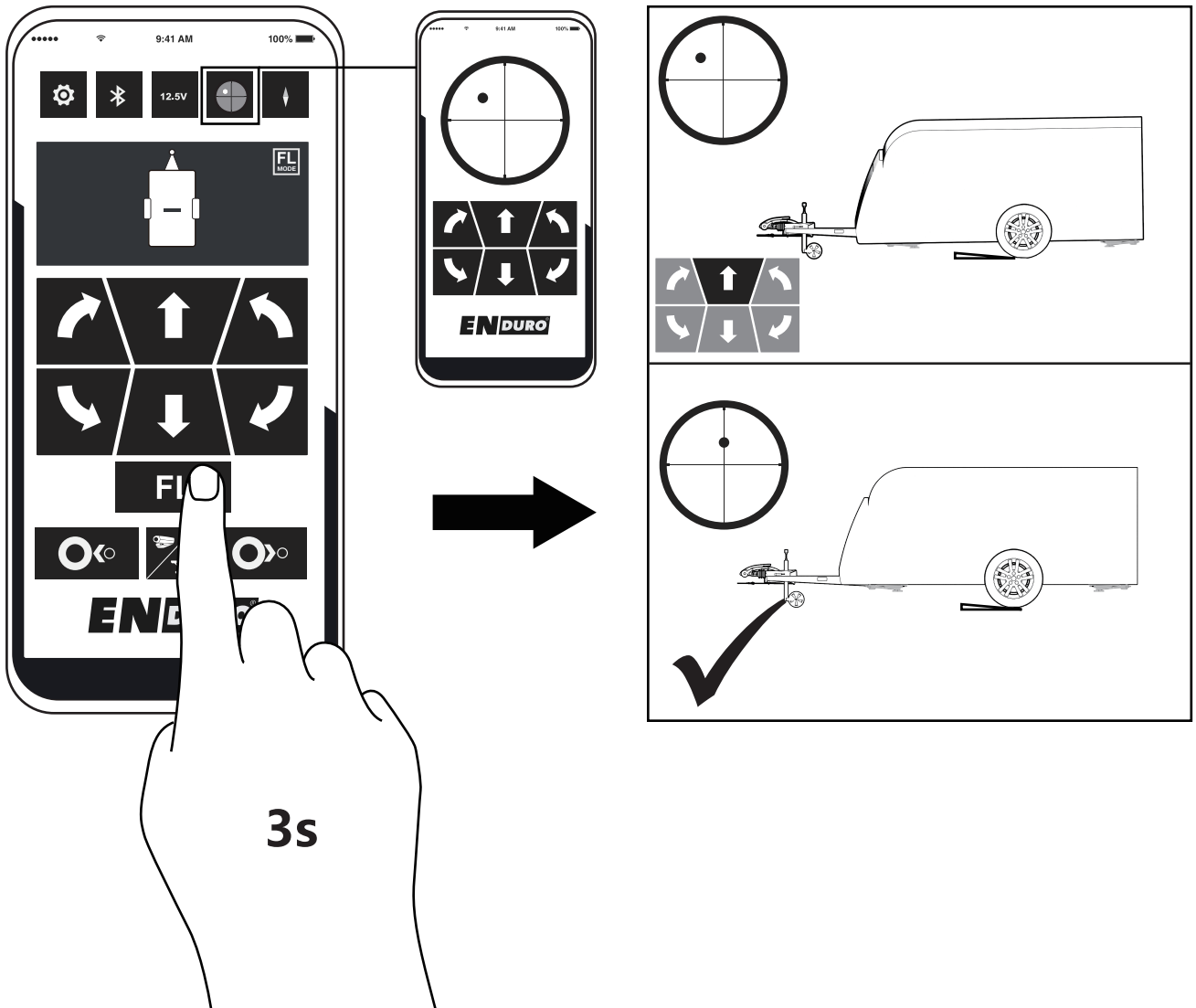


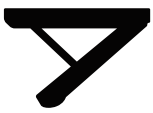
Automatic Version



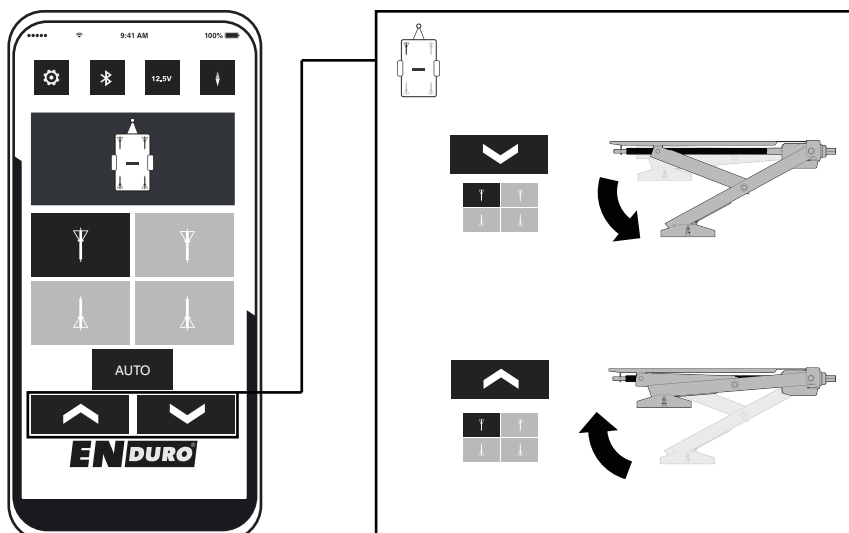
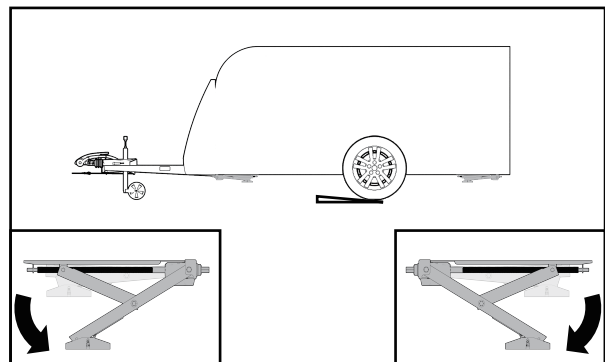
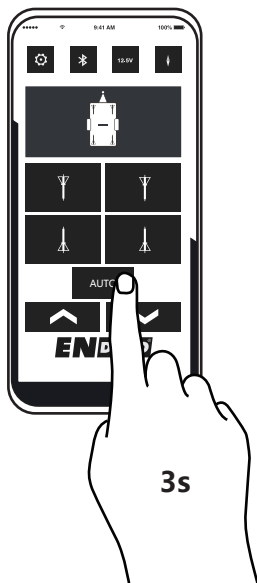
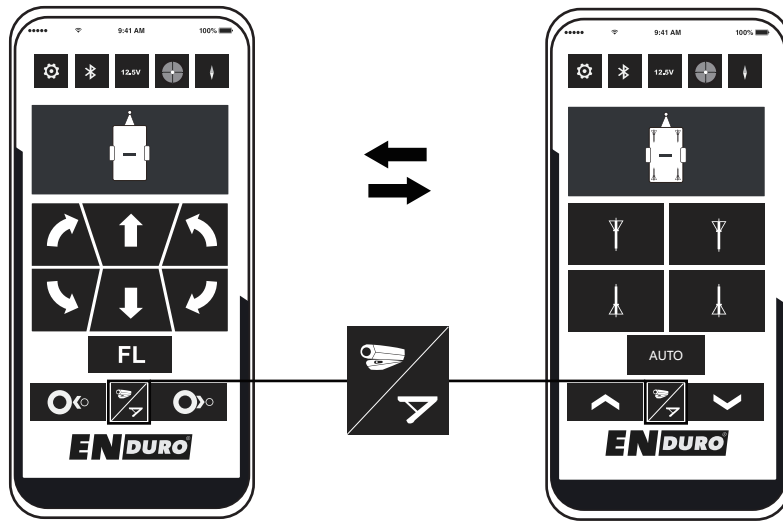


# FL Version





# FL Version / AutoSteady






## CONTACT / KONTAKT


### Tradekar Benelux BV

Ohmweg 1  
4104 BM CULEMBORG  
Nederland  
Tel: +31 (0)345 470990

[info@enduro-europe.eu](mailto:info@enduro-europe.eu)

[www.enduro-europe.eu](http://www.enduro-europe.eu)

 Enduro Technology


 Enduro Technology

### EAL GmbH

Otto-Hausmann-Ring 107  
42115 Wuppertal  
Deutschland  
Telefon: +49 (0)202 42 92 83 0  
Telefax: +49 (0)202 42 92 83 160

[info@eal-vertrieb.com](mailto:info@eal-vertrieb.com)

[www.eal-vertrieb.com](http://www.eal-vertrieb.com)

 Enduro.Rangierhilfe

**EN** TECHNOLOGY®  
**DURO**

